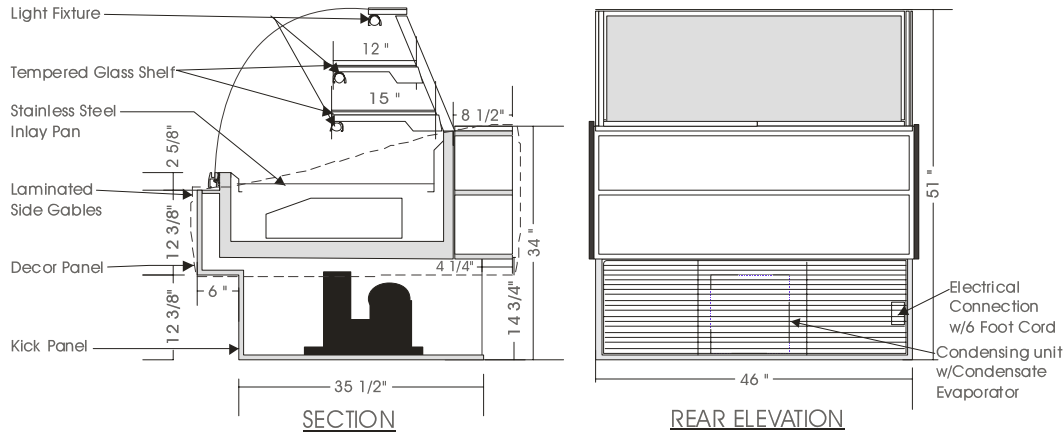


Signature

REFRIGERATED SELF SERVE DISPLAY – DLRP-S

MODELS: DLRP-S 5138, DLRP-S 5146, DLRP-S 5158,



SPECIFICATIONS

MODEL	DIMENSIONS	UNIT	ELECTRICAL(DUAL VOLTAGE 1 Ph/60Hz)			SHIPPING WT.
			COND. UNIT	LIGHTS	EVAPORATOR PAN	
DLRP-S 5138	38L."X45 ³ / ₄ "D.X51"H.	¹ / ₂	115V/14.0 AMPS	115V/2.0 AMPS	115V/8.3 AMPS	400 lb.
DLRP-S 5146**	46L."X45 ³ / ₄ "D.X51"H.	³ / ₄	230V/ 8.0 AMPS	115V/2.0 AMPS	115V/8.3 AMPS	450 lb.
DLRP-S 5158**	58L."X45 ³ / ₄ "D.X51"H.	³ / ₄	230V/ 9.4 AMPS	115V/2.5 AMPS	115V/8.3 AMPS	570 lb.

*230V Units – Permanent connection to Condensing unit, Light & Evaporator pan(Optional) supplied with cord & plug.
 Floor drain highly recommended for these units. Add ³/₄" for each side for end gables. Front air intake ventilation grill.*

STANDARD FEATURES

1. Top light.
2. Open front for complete self serve access.
3. Tempered side glass, removable.
4. Stainless steel interior.
5. Clear satin anodized aluminum hinge and framework.
6. Exterior & interior laminate finish: Black.
7. Self contained air cooled condensing unit.
8. Laminate covered side gables.

OPTIONS

1. Plastic laminate exterior finish of choice.
2. Powder coated aluminum hinge and framework.
3. Custom anodized colour hinge and framework.
4. Custom units on request.
5. Remote condensing unit.
6. Condensate evaporator pan.

Operating temperature of 2° to 4° Celsius (37° to 40°F.) under normal store conditions of 24° Celsius (75°F.) with 50% relative humidity. Condensation on glass may occur under hot & humid conditions.

Product entering the display case must be 4° Celsius (40°F.) or lower.

*Due to constant improvements, specifications are subject to change without notice.

** Permanent electrical connection required.



Canadian Display Systems Inc.

177 Westcreek Drive, Woodbridge, Ontario L4L 9N6
 Ph: 905-265-7888, 1-800-895-5862 Fax: 905-265-7692
 email cds1@on.aibn.com
www.canadiandisplayssystems.com