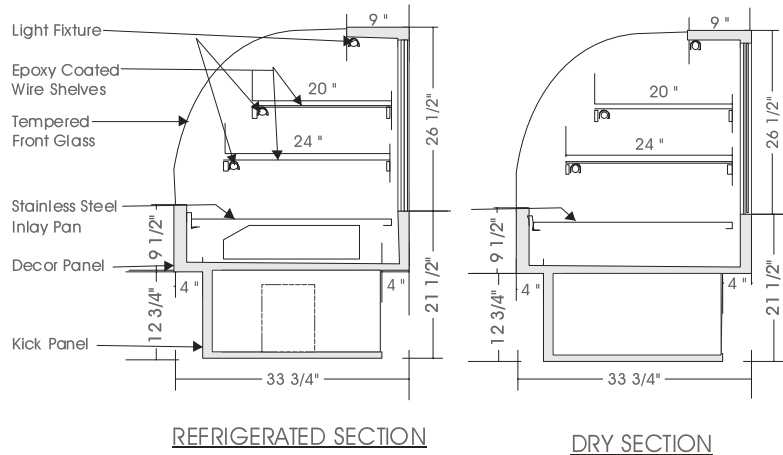


Signature

REF./ DRY DUAL DISPLAY – DRDF

MODELS: DRDF 4848, DRDF 4860, DRDF 4878, DRDF 4895



SPECIFICATIONS

MODEL	DI,ENSIONS	COMPRESSOR	ELECTRICAL	SHIPPING WT.
DRDF 4848	48"L.X33 ³ / ₄ "D.X48"H.	1/4 H.P.	115V/1/60 HZ/ 9.0 AMP	400 lb.
DRDF 4860	60"L.X33 ³ / ₄ "D.X48"H.	1/4 H.P.	115V/1/60 HZ/ 9.5 AMP	480 lb.
DRDF 4878	78"L.X33 ³ / ₄ "D.X48"H.	1/3 H.P.	115V/1/60 HZ/10.0 AMP	550 lb.
DRDF 4895	95"L.X33 ³ / ₄ "D.X48"H.	1/3 H.P.	115V/1/60 HZ/11.0 AMP	740 lb.

STANDARD FEATURES

1. Top light.
2. Shelf lights.
3. Fixed tempered curved front glass, thermo pane.
4. Exterior & interior laminate finish: Black.
5. Self contained air cooled compressor w/ hot gas condensate evaporator pan.
6. Solid sides w/mirrored interior ends.

OPTIONS

1. Plastic laminate exterior finish of choice.
2. Tempered glass shelves.
3. Custom units on request.
4. Remote condensing unit.

Operating temperature of 2° to 4° Celsius (37° to 40° F.) under normal store conditions of 24° Celsius (75° F.) with 50% relative humidity. Condensation on glass may occur under hot & humid conditions.
Product entering the display case must be 4° Celsius (40° F.) or lower.

*Due to constant improvements, specifications are subject to change without notice.



Canadian Display Systems Inc.

177 Westcreek Drive, Woodbridge, Ontario L4L 9N6
Ph: 905-265-7888, 1-800-895-5862 Fax: 905-265-7692
email cds1@on.aibn.com
www.canadiandisplayystems.com