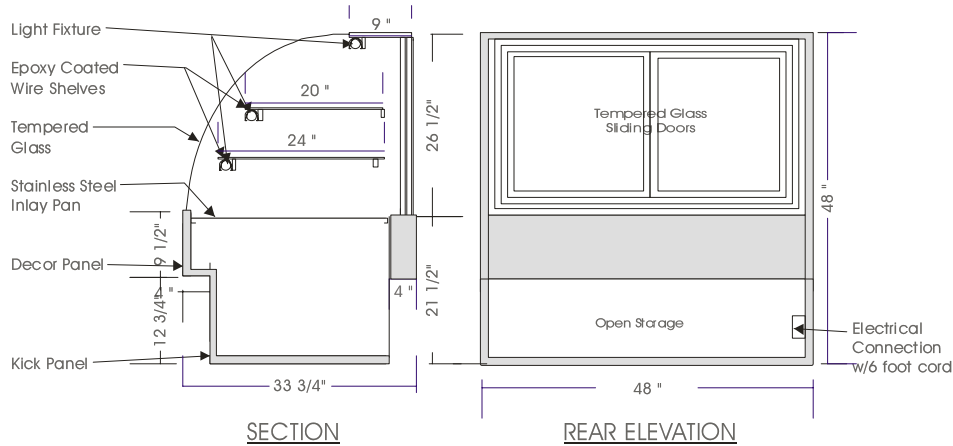


# Signature

## DRY HIGH VOLUME DISPLAY – DDF

MODELS: DDF 4840, DDF 4848, DDF 4860, DDF 4878



### SPECIFICATIONS

MODEL	DIMENSIONS	ELECTRICAL	SHIPPING WT.
DDF 4840	40\"L.X33 $\frac{3}{4}$ \"D.X48\"H.	115V/1/60 HZ/1.5 AMP	300 lb.
DDF 4848	48\"L.X33 $\frac{3}{4}$ \"D.X48\"H.	115V/1/60 HZ/1.5 AMP	380 lb.
DDF 4860	60\"L.X33 $\frac{3}{4}$ \"D.X48\"H.	115V/1/60 HZ/2.0 AMP	470 lb.
DDF 4878	78\"L.X33 $\frac{3}{4}$ \"D.X48\"H.	115V/1/60 HZ/2.5 AMP	560 lb.

#### STANDARD FEATURES

1. Top light.
2. Shelf lights.
3. Fixed tempered curved front glass.
4. Exterior & interior laminate finish: Black.
5. Solid sides w/mirrored interior ends.

#### OPTIONS

1. Plastic laminate exterior finish of choice.
2. Tempered glass shelves.
3. Custom units on request.

\*Due to constant improvements, specifications are subject to change without notice.



## Canadian Display Systems Inc.

177 Westcreek Drive, Woodbridge, Ontario L4L 9N6  
 Ph: 905-265-7888, 1-800-895-5862 Fax: 905-265-7692  
 email [cds1@on.aibn.com](mailto:cds1@on.aibn.com)  
[www.canadiandisplayystems.com](http://www.canadiandisplayystems.com)