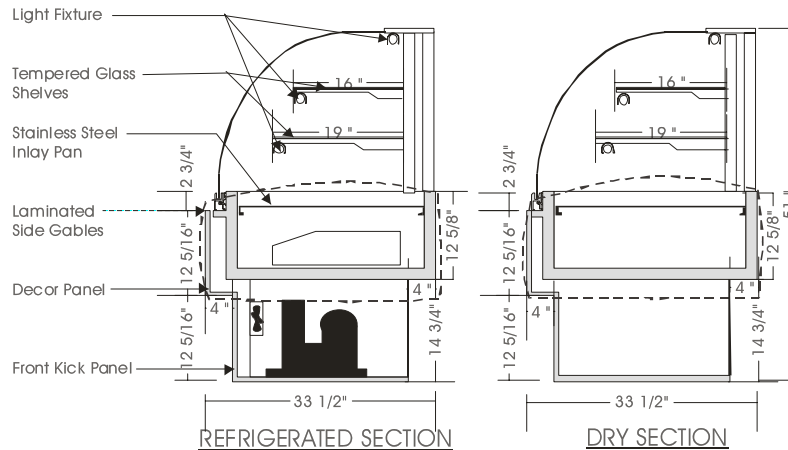


# Signature

## REF./DRY DUAL DISPLAY CASE – DRDH

MODELS: DRDH 5146, DRDH 5158, DRDH 5176, DRDH 5192



### SPECIFICATIONS

MODEL	DIMENSIONS	COMPRESSOR	ELECTRICAL	SHIPPING WT.
DRDH 5146	46"L.X33½"D.X51"H.	¼ H.P.	115V/1/60HZ/ 8.5 AMP	400 lb.
DRDH 5158	58"L.X33½"D.X51"H.	⅓ H.P.	115V/1/60HZ/ 9.0 AMP	480 lb.
DRDH 5176	76"L.X33½"D.X51"H.	⅓ H.P.	115V/1/60HZ/10.0 AMP	550 lb.
DRDH 5192	92"L.X33½"D.X51"H.	⅓ H.P.	115V/1/60HZ/11.0 AMP	740 lb.

*Note: Add ¼" each side for side gables.*

#### STANDARD FEATURES

1. Top light
2. Shelf lights.
3. Tempered curved front glass, tilt forward and removable.
4. Front glass defogging system.
5. Tempered side glass.
6. Stainless steel interior.
7. Exterior laminate finish: Black.
8. Self contained air cooled compressor w/hot gas condensate evaporator pan.

#### OPTIONS

1. Plastic laminate exterior finish of choice.
2. Powder coated aluminum hinge and framework.
3. Custom anodized colour hinge and framework.
4. Custom units on request.
5. Remote condensing unit.

Operating temperature of 2° to 4° Celsius (37° to 40°F.) under normal store conditions of 24° Celsius (75°F.) with 50% relative humidity.

Condensation on glass may occur under hot & humid conditions.

Product entering the display case must be 4° Celsius (40°F.) or lower.

\*Due to constant improvements, specifications are subject to change without notice.



## Canadian Display Systems Inc.

177 Westcreek Drive, Woodbridge, Ontario LNL 9N6  
 Ph: 905-265-7888, 1-800-895-5862 Fax: 905-265-7692  
 email [cds1@on.aibn.com](mailto:cds1@on.aibn.com)  
[www.canadiandisplayystems.com](http://www.canadiandisplayystems.com)