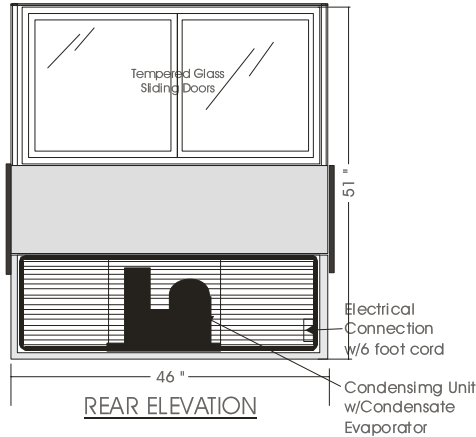
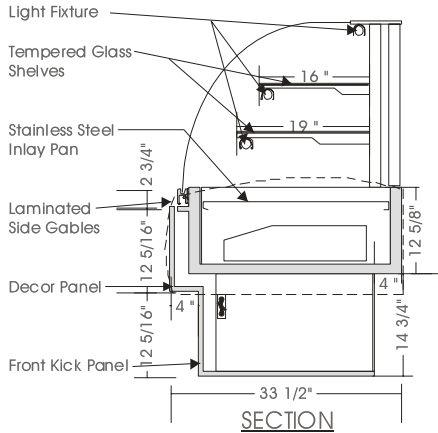


Signature

REFRIGERATED DISPLAY – DLRH

MODELS: DLRH 5138, DLRH 5146, DLRH 5158, DLRH 5176, DLRH 5192



SPECIFICATIONS

MODEL	DIMENSIONS	COMPRESSOR	ELECTRICAL	SHIPPING WT.
DLRH 5138	38"L.X33 1/2"D.X51"H.	1/3 H.P.	115V/1/60HZ/ 9.0 AMP	300 lb.
DLRH 5146	46"L.X33 1/2"D.X51"H.	1/3 H.P.	115V/1/60HZ/10.0 AMP	480 lb.
DLRH 5158	58"L.X33 1/2"D.X51"H.	1/2 H.P.	115V/1/60HZ/12.0 AMP	550 lb.
DLRH 5176	76"L.X33 1/2"D.X51"H.	1/2 H.P.	115V/1/60HZ/13.0 AMP	740 lb.
DLRH 5192**	92"L.X33 1/2"D.X51"H.	3/4 H.P.	115V/1/60HZ/16.0 AMP	825 lb.

Note: Add 3/4" each side for side gables.

STANDARD FEATURES

1. Top light.
2. Shelf lights.
3. Tempered curved front, tilt forward and removable.
4. Front glass defogging system.
5. Stainless steel interior.
6. Clear satin anodized aluminum hinge and framework.
7. Exterior & interior laminate finish: Black.
8. Self contained air cooled compressor w/ hot gas condensate evaporator pan.
9. Laminate cover side gables.

OPTIONS

1. Plastic laminate exterior finish of choice.
2. Powder coated aluminum hinge and framework.
3. Custom anodized colour hinge and framework.
4. Custom units on request.
5. Remote condensing unit.

Operating temperature of 2° to 4° Celsius (37° to 40° F.) under normal store conditions of 24° Celsius (75° F.) with 50% relative humidity. Condensation on glass may occur under hot & humid conditions.

Product entering the display case must be 4° Celsius (40° F.) or lower.

*Due to constant improvements, specifications are subject to change without notice.

** Permanent electrical connection required.



Canadian Display Systems Inc.

177 Westcreek Drive, Woodbridge, Ontario L4L 9N6
 Ph: 905-265-7888, 1-800-895-5862 Fax: 905-265-7692
 email cds1@on.aibn.com
www.canadiandisplayystems.com