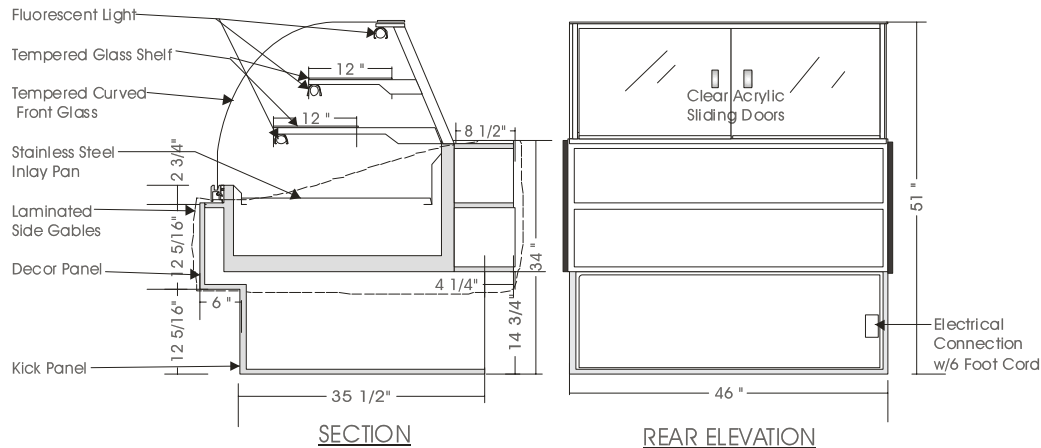


Signature

DRY DISPLAY – DLNP

MODELS: DLNP 5138, DLNP 5146, DLNP 5158, DLNP 5176, DLNP 5192



SPECIFICATIONS

MODEL	DIMENSIONS	ELECTRICAL	SHIPPING WT.
DLNP 5138	38"L.X45 ³ / ₄ "D.X51"H.	115V/1/60HZ/1.5 AMP	300 lb.
DLNP 5146	46"L.X45 ³ / ₄ "D.X51"H.	115V/1/60HZ/1.5 AMP	360 lb.
DLNP 5158	58"L.X45 ³ / ₄ "D.X51"H.	115V/1/60HZ/2.0 AMP	420 lb.
DLNP 5176	76"L.X45 ³ / ₄ "D.X51"H.	115V/1/60HZ/2.5 AMP	520 lb.
DLNP 5192	92"L.X45 ³ / ₄ "D.X51"H.	115V/1/60HZ/3.0 AMP	600 lb.

Note: Add 3/4" each side for side gables.

STANDARD FEATURES

1. Top light.
2. Shelf lights.
3. Tempered curved front glass, tilt forward and removable.
4. Stainless steel interior.
5. Clear satin anodized aluminum hinge and framework.
6. Exterior & interior laminate finish: Black.
7. Laminate covered end gables.

OPTIONS

1. Plastic laminate exterior finish of choice.
2. Powder coated aluminum hinge and framework.
3. Custom anodized colour hinge and framework.
4. Custom units on request.

**Due to constant improvements, specifications are subject to change without notice.*



Canadian Display Systems Inc.

177 Westcreek Drive, Woodbridge, Ontario L4L 9N6
 Ph: 905-265-7888, 1-800-895-5862 Fax: 905-265-7692
 email cds1@on.aibn.com
www.canadiandisplayystems.com