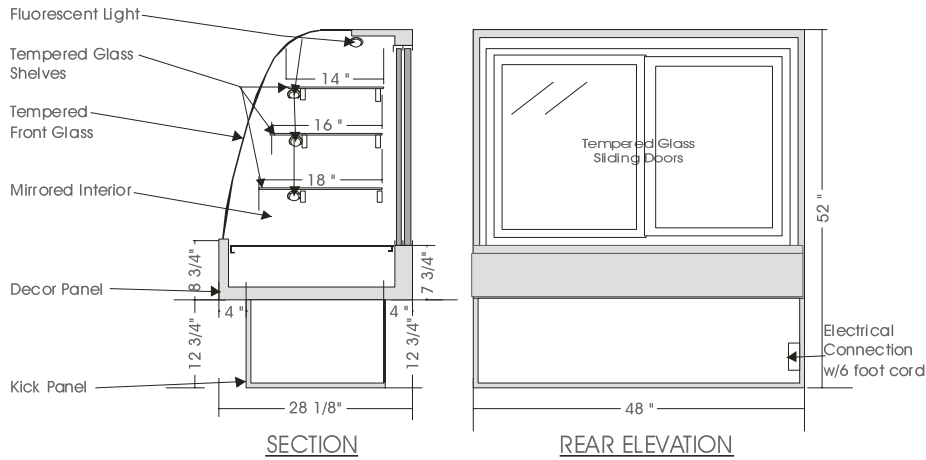


Infinity

DRY CANDY – IDCM

MODELS: IDCM 5240, IDCM 5248, IDCM 5260, IDCM 5278



SPECIFICATIONS

MODEL	DIMENSIONS	ELECTRICAL	SHIPPING WT.
IDCM 5240	40\"L.X28\"D.X52\"H.	115V/1/60 HZ/2.0 AMP	300 lb.
IDCM 5248	48\"L.X28\"D.X52\"H.	115V/1/60 HZ/3.0 AMP	360 lb.
IDCM 5260	60\"L.X28\"D.X52\"H.	115V/1/60 HZ/4.5 AMP	420 lb.
IDCM 5278	78\"L.X28\"D.X52\"H.	115V/1/60 HZ/5.0 AMP	510 lb.

STANDARD FEATURES

1. Top light.
2. Shelf lights.
3. Fixed tempered curved front glass.
4. Exterior & interior laminate finish: Black.
5. Solid sides w/mirrored interior.

OPTIONS

1. Plastic laminate exterior finish of choice.
2. Tempered glass shelves.
3. Custom units on request.
4. Remote condensing unit.
5. Mirrored sliding doors.

*Due to constant improvements, specifications are subject to change without notice.



Canadian Display Systems Inc.

177 West Creek Drive, Woodbridge, Ontario L4L 9N6
 905-265-7888 905-265-7692 fax 1-800-895-5862
 email cds1@on.aibn.com
www.canadiandisplayssystems.com