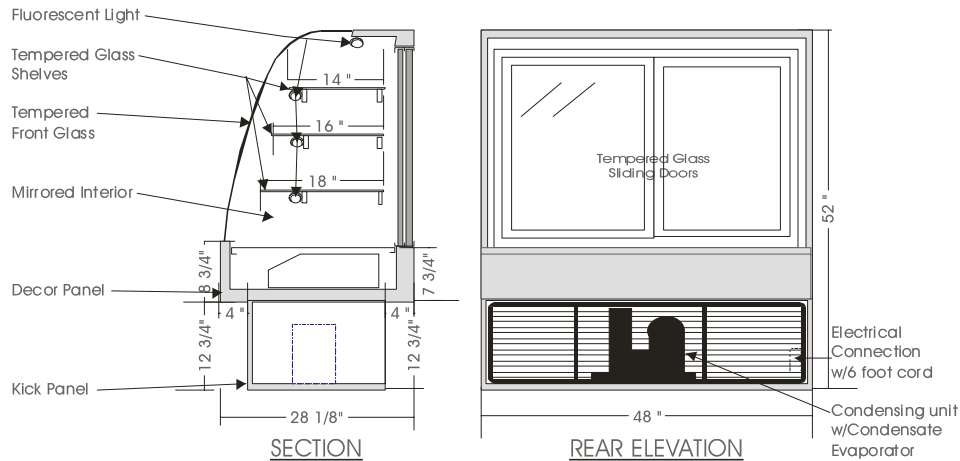


Infinity

REFRIGERATED CANDY – IRCM

MODELS: IRCM 5240, IRCM 5248, IRCM 5260, IRCM 5278



SPECIFICATIONS

| MODEL | DIMENSIONS | COMPRESSOR | ELECTRICAL | SHIPPING WT. |
|-----------|-------------------|------------|-----------------------|--------------|
| IRCM 5240 | 40"L.X28"D.X52"H. | ¼ H.P. | 115V/1/60 HZ/ 9.0 AMP | 400 lb. |
| IRCM 5248 | 48"L.X28"D.X52"H. | ¼ H.P. | 115V/1/60 HZ/ 9.0 AMP | 500 lb. |
| IRCM 5260 | 60"L.X28"D.X52"H. | ¼ H.P. | 115V/1/60 HZ/ 9.5 AMP | 570 lb. |
| IRCM 5278 | 78"L.X28"D.X52"H. | ½ H.P. | 115V/1/60 HZ/10.0 AMP | 760 lb. |

STANDARD FEATURES

1. Top light.
2. Shelf lights.
3. Fixed tempered curved front glass, thermo pane.
4. Front glass defogging system.
5. Exterior & interior laminate finish: Black.
6. Self contained air cooled compressor w/ hot gas condensate evaporator pan.
7. Solid sides w/mirrored interior.

OPTIONS

1. Plastic laminate exterior finish of choice.
2. Mirrored sliding doors.
3. Tempered glass shelves.
4. Custom units on request.
5. Remote condensing unit.

Operating temperature of 15° to 18° Celsius (59° to 65° F.) under normal store conditions of 24° Celsius (75° F.) with 50% relative humidity. Condensate may occur under hot & humid conditions.

*Due to constant improvements, specifications are subject to change without notice.



Canadian Display Systems Inc.

177 Westcreek Drive, Woodbridge, Ontario L4L 9N6
Ph: 905-265-7888, 1-800-895-5862 Fax: 905-265-7692

email cds1@on.aibn.com

www.canadiandisplayystems.com