

PROJECT:

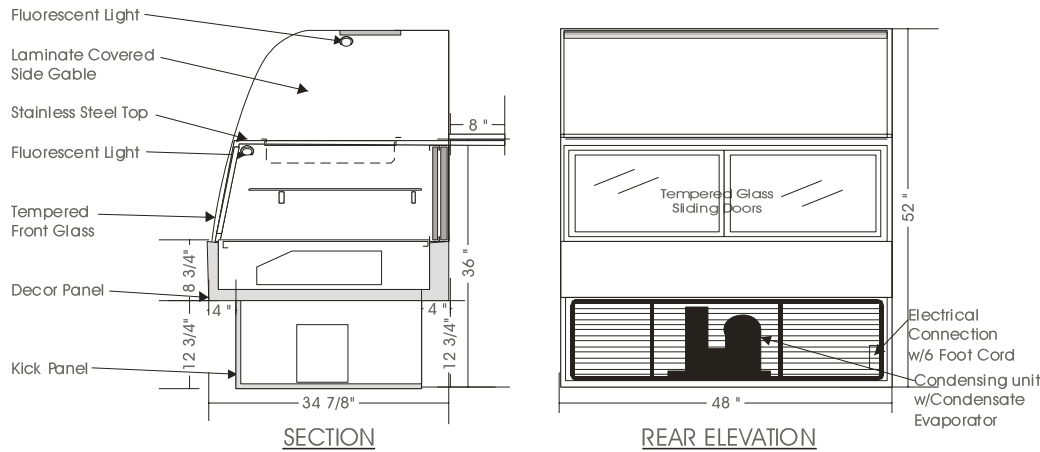
QUANTITY:

ITEM: NO:

Infinity

SALAD/SANDWICH COLD FOOD TABLE – ISM

MODELS: ISM 5240, ISM 5248, ISM 5260, ISM 5278



SPECIFICATIONS:

MODEL	DIMENSIONS	COMPRESSOR	ELECTRICAL	SHIPPING WT.
ISM 5240	40"L.X34 ⁷ / ₈ "D.X52"H.	¼ H.P.	115V/1/60 HZ/ 9.5 AMP	400 lb.
ISM 5248	48"L.X34 ⁷ / ₈ "D.X52"H.	¼ H.P.	115V/1/60 HZ/ 9.0 AMP	480 lb.
ISM 5260	60"L.X34 ⁷ / ₈ "D.X52"H.	½ H.P.	115V/1/60 HZ/10.0 AMP	580 lb.
ISM 5278	78"L.X34 ⁷ / ₈ "D.X52"H.	½ H.P.	115V/1/60 HZ/11.0 AMP	720 lb.

STANDARD FEATURE

1. Top light.
2. Shelf light.
3. Fixed tempered curved front glass, thermo pane.
4. Solid sides w/mirrored interior sides in display section only.
5. Exterior & interior laminate finish: Black.
6. Self contained air cooled compressor w/hot gas condensate evaporator.

OPTIONS

1. Plastic laminate exterior finish of choice.
2. Custom units upon request.
3. Remote condensing unit.
4. Mirrored sliding doors.

Operating temperature of 2° to 4° Celsius (37° to 40° F.) under normal store conditions of 24° Celsius (75° F.) with 50% relative humidity. Condensation on glass may occur under hot & humid conditions.

Product entering the display case must be 4° Celsius (40° F.) or lower.

*Due to constant improvements, specifications are subject to change without notice.



Canadian Display Systems Inc.

177 Westcreek Drive, Woodbridge, Ontario L4L 9N6
Ph: 905-265-7888, 1-800-895-5862 Fax: 905-265-7692

email cds1@on.aibn.com

www.canadiandisplayssystem.com