

PROJECT:

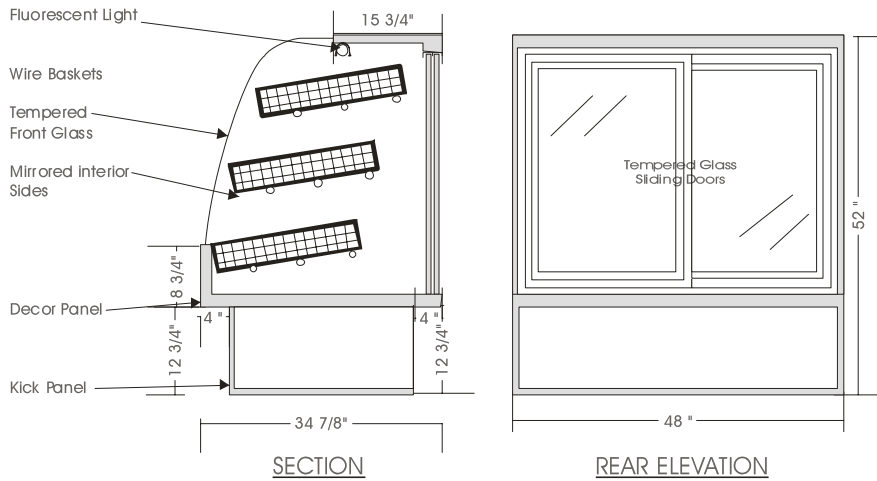
QUANTITY:

ITEM: NO:

Infinity

BUN CASE – IBM

MODELS: IBM 5248, IBM 5260, IBM 5278



SPECIFICATIONS

MODEL	DIMENSIONS	ELECTRICAL	SHIPPING WT	BUN BASKETS
IBM 5248	48"L.X34 ⁷ / ₈ "D.X52"H.	115V/1/60 HZ/1.0 AMP	360 lb.	9 – 14"X20"
IBM 5260	60"L.X34 ⁷ / ₈ "D.X52"H.	115V/1/60 HZ/1.0 AMP	420 lb.	12 – 14"X20"
IBM 5278	78"L.X34 ⁷ / ₈ "D.X52"H.	115V/1/60 HZ/1.0 AMP	560 lb.	15 – 14"X20"

STANDARD FEATURES

1. Top light.
2. Solid sides w/mirrored interior gables.
3. Fixed tempered curved front glass.
4. Exterior & interior laminate finish: Black.

OPTIONS

1. Plastic laminate exterior finish of choice.
2. Custom units upon request.

*Due to constant improvements, specifications are subject to change without notice.



Canadian Display Systems Inc.

177 Westcreek Drive, Woodbridge, Ontario L4L 9N6
 Ph: 905-265-7888, 1-800-895-5862 Fax: 905-265-7692
 email cds1@on.aibn.com
www.canadiandisplayystems.com