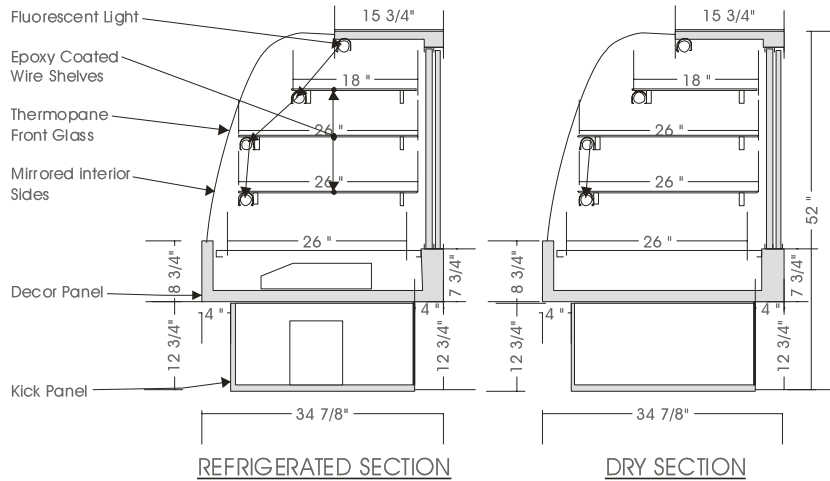


# Infinity

## REF./DRY DUAL MERCHANDISER – IRDM

MODELS: IRDM 5248, IRDM 5260, IRDM 5278, IRDM 5295



### SPECIFICATIONS

MODEL	DIMENSIONS	COMPR.	ELECTRICAL	SHIP WT.	PAN CAPACITY
IRDM 5248	48"L.X34 <sup>7</sup> / <sub>8</sub> "D.X52"H.	1/3 H.P.	115V/1/60HZ/ 9.0AMP	500 lb.	6 -18"X26", 2 -12"X16"
IRDM 5260	60"L.X34 <sup>7</sup> / <sub>8</sub> "D.X52"H.	1/3 H.P.	115V/1/60HZ/10.0AMP	570 lb.	6 -18"X26", 6-9"X26", 4 -12"X16"
IRDM 5278	78"L.X34 <sup>7</sup> / <sub>8</sub> "D.X52"H.	1/3 H.P.	115V/1/60HZ/11.0AMP	740 lb.	12 -18"X26", 6 -12"X18"
IRDM 5295	95"L.X34 <sup>7</sup> / <sub>8</sub> "D.X52"H.	1/3 H.P.	115V/1/60HZ/12.0AMP	960 lb.	12 -18"X26", 6 -12"X18"

#### STANDARD FEATURES

1. Top light.
2. Shelf lights.
3. Fixed tempered curved front glass – thermo pane.
4. Solid sides w/mirrored interior.
5. Exterior & interior laminate finish – black.
6. Self contained air cooled compressor w/hot gas condensate evaporator.

#### OPTIONS

1. Plastic laminate exterior finish of choice.
2. Custom units on request.
3. Tempered glass shelves.
4. Remote condensing unit.
5. Mirrored sliding doors.

Operating temperature of 2° to 4° Celsius (37° to 40° F.) under normal store conditions of 24° Celsius (75° F.) with 50% relative humidity. Condensation on glass may occur under hot & humid conditions. Product entering the display case must be 4° Celsius (40° F.) or lower.

\*Due to constant improvements, specifications are subject to change without notice.



## Canadian Display Systems Inc.

177 Westcreek Drive, Woodbridge, Ontario L4L 9N6  
Ph: 905-265-7888, 1-800-895-5862 Fax: 905-265-7692  
email [cds1@on.aibn.com](mailto:cds1@on.aibn.com)  
[www.canadiandisplayystems.com](http://www.canadiandisplayystems.com)