

PROJECT:

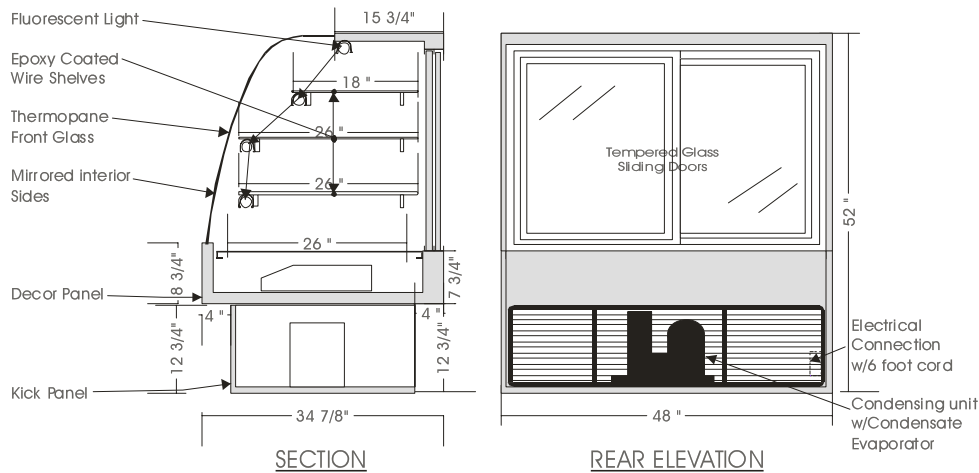
QUANTITY:

ITEM: NO:

Infinity

REF. HIGH VOLUME MERCHANDISER – IRM

MODELS: IRM 5240, IRM 5248, IRM 5260, IRM 5278



SPECIFICATIONS:

MODEL	DIMENSIONS	COMPR.	ELECTRICAL	SHIP WT.	PAN CAPACITY
IRM 5240	40"L.X34 7/8"D.X52"H.	1/3 H.P.	115V/1/60HZ/09.0 AMP	420 lb.	6 - 18"X26", 3 - 12"X18"
IRM 5248	48"L.X34 7/8"D.X52"H.	1/3 H.P.	115V/1/60HZ/09.0 AMP	500 lb.	6 - 18"X26", 3 - 9"X26", 3 - 12"X18"
IRM 5260	60"L.X34 7/8"D.X52"H.	1/3 H.P.	115V/1/60HZ/10.0 AMP	570 lb.	11 - 18"X26"
IRM 5278	78"L.X34 7/8"D.X52"H.	1/2 H.P.	115V/1/60HZ/12.0 AMP	760 lb.	12 - 18"X26", 6 - 12"X18"

STANDARD FEATURES

1. Top light.
2. Shelf lights.
3. Fixed tempered curved front glass – thermo pane.
4. Solid sides w/mirrored interior ends.
5. Exterior & interior laminate finish: Black.
6. Self contained air cooled compressor w/hot gas condensate evaporator.

OPTIONS

1. Plastic laminate exterior finish of choice.
2. Custom units on request.
3. Tempered glass shelves.
4. Remote condensing unit.
5. Mirrored sliding doors.

Operating temperature of 2° to 4° Celsius (37° to 40°F.) under normal store conditions of 24° Celsius (75°F.) with 50% relative humidity.

Condensation on glass may occur under hot & humid conditions.

Product entering the display case must be 4° Celsius (40°F.) or lower.

*Due to constant improvements, specifications are subject to change without notice.



Canadian Display Systems Inc.

177 Westcreek Drive, Woodbridge, Ontario L4L 9N6
Ph: 905-265-7888, 1-800-895-5862 Fax: 905-265-7692

email cds1@on.aibn.com

www.canadiandisplayssystems.com