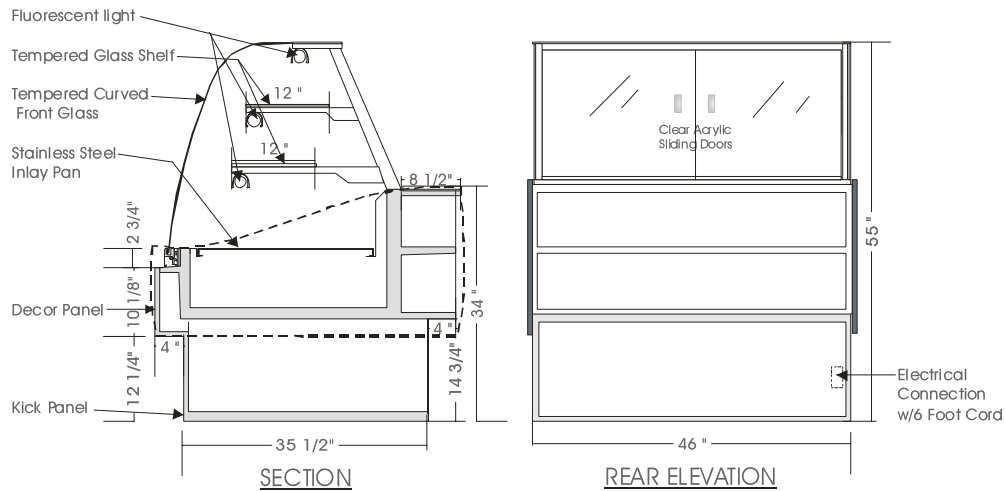


Infinity

DRY DISPLAY CASE – INP

MODELS: INP 5538, INP 5546, INP 5558, INP 5576, INP 5592



SPECIFICATIONS

MODEL	DIMENSION	ELECTRICAL	SHIPPING WT.
INP 5538	38"L.X44"D.X55"H.	115V/1/60 HZ/1.5 AMP	400 lb.
INP 5546	46"L.X44"D.X55"H.	115V/1/60 HZ/1.5 AMP	525 lb.
INP 5558	58"L.X44"D.X55"H.	115V/1/60HZ/2.0 AMP	610 lb.
INP 5576	76"L.X44"D.X55"H.	115V/1/60HZ/2.5 AMP	670 lb.
INP 5592	92"L.X44"D.X55"H.	115V/1/60HZ/3.0 AMP	850 lb.

Note: Add 3/4" each side for side gables.

STANDARD FEATURES

1. Top light.
2. Shelf lights
3. Tempered curved front glass , tilt forward and removable.
4. Clear satin anodized aluminum hinge and framework.
5. Exterior & interior laminate finish: Black.
6. Laminate covered side gables.

OPTIONS

1. Plastic laminate exterior finish of choice.
2. Powder coated aluminum hinge and framework.
3. Custom anodized colour hinge and framework.
4. Extra shelf c/w light.

*Due to constant improvements, specifications are subject to change without notice.



Canadian Display Systems Inc.

177 West Creek Drive, Woodbridge, Ontario L4L 9N6
 Ph: 905-265-7888, 1-800-895-5862 Fax: 905-265-7692
 email cds1@on.aibn.com
www.canadiandisplayssystems.com