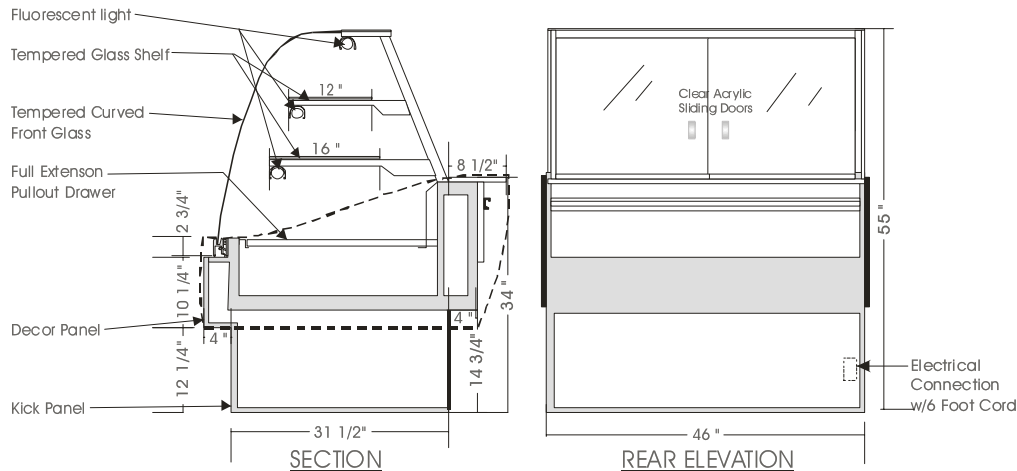


# Infinity

## DRY DRAWER DISPLAY – IDP-D

MODELS: IDP-D 5538, IDP-D 5546, IDP-D 5558, IDP-D 5576, IDP-D 5592



### SPECIFICATIONS

MODEL	DIMENSION	ELECTRICAL	SHIPPING WT.
IDP-D 5538	38"L.X44"D.X55"H.	115V/1/60 HZ/1.5 AMP	400 lb.
IDP-D 5546	46"L.X44"D.X55"H.	115V/1/60 HZ/1.5 AMP	525 lb.
IDP-D 5558	58"L.X44"D.X55"H.	115V/1/60HZ/2.0 AMP	610 lb.
IDP-D 5576	76"L.X44"D.X55"H.	115V/1/60HZ/2.5 AMP	670 lb.
IDP-D 5592	92"L.X44"D.X55"H.	115V/1/60HZ/3.0 AMP	850 lb.

*Note: Add 3/4" each side for side gables.*

#### STANDARD FEATURES

1. Top light.
2. Shelf lights.
3. Tempered curved front glass, tilt forward and removable.
4. Full extension pullout laminated drawer.
5. Clear satin anodized aluminum hinge and framework.
6. Exterior & interior laminate finish: Black.
7. Laminated covered side gables.

#### OPTIONS

1. Plastic laminate exterior finish of choice.
2. Powder coated aluminum hinge and framework.
3. Custom anodized colour hinge and framework.
4. Extra shelf c/w light.

\*Due to constant improvements, specifications are subject to change without notice.



## Canadian Display Systems Inc.

177 Westcreek Drive, Woodbridge, Ontario L4L 9N6  
 Ph: 905-265-7888, 1-800-895-5862 Fax: 905-265-7692  
 email [cds1@on.aibn.com](mailto:cds1@on.aibn.com)  
[www.canadiandisplayystems.com](http://www.canadiandisplayystems.com)