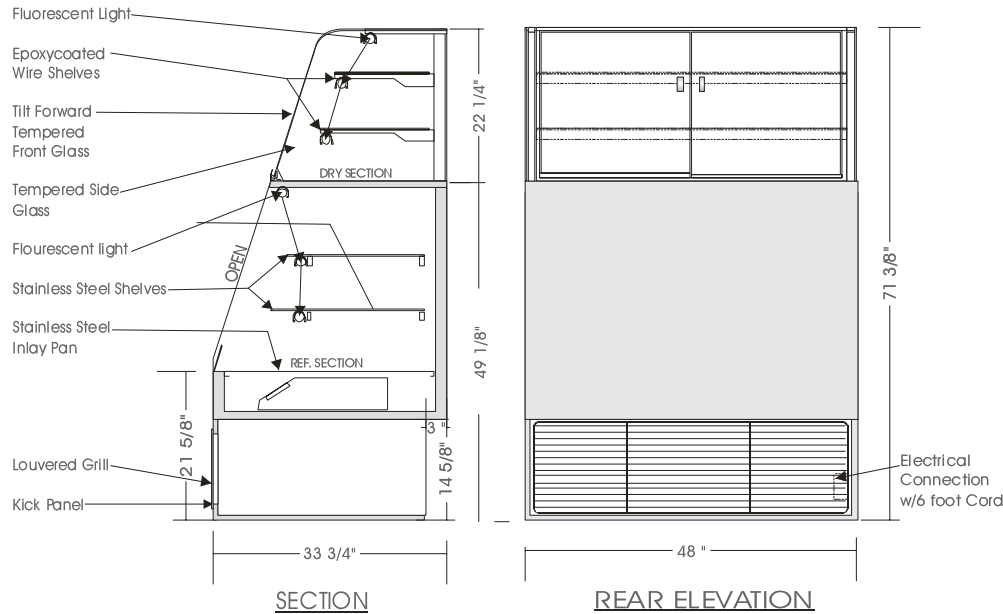


Grab And Go

REF. SELF SERVE / DRY SERVE MERCHANDISER – RSDS 71

MODELS: RSDS 7136, RSDS 7148, RSDS 7160



SPECIFICATIONS

MODEL	DIMENSIONS	COMP H.P.	ELECTRICAL			SHIPPING WT.
			COND. UNIT	LIGHTS	EVAP. PAN	
RSDS 7136	36"L.X33 ³ / ₄ "D.X71 ³ / ₈ "H.	1/2	115V/1/60 HZ/ 16.0 AMP	115V/2.0 AMP	115V/8.3 AMP	450 lb.
RSDS 7148	48"L.X33 ³ / ₄ "D.X71 ³ / ₈ "H.	3/4	230V/1/60 HZ/ 8.0 AMP	115V/2.5 AMP	115V/8.3 AMP	510 lb.
RSDS 7160	60"L.X33 ³ / ₄ "D.X71 ³ / ₈ "H.	3/4	230V/1/60 HZ/ 9.4 AMP	115V/3.0 AMP	115V/8.3 AMP	590 lb.

Direct connection to Condensing unit, Light & Evaporator pan(Optional).

Floor drain highly recommended for these units. Front air intake ventilation grill.

STANDARD FEATURES

1. Top light.
2. Tempered side glass, removable.
3. Tempered curved front glass tilt forward and removable.
4. Clear satin anodized aluminum hinge & framework.
5. Self contained air cooled compressor
6. Exterior & interior laminate finish: Black

OPTIONS

1. Additional shelf lights.
2. Plastic laminate exterior finish of choice.
3. Powder coated or colour anodized hinge & framework.
4. Bumper rails – specify colour & location.
5. Remote condensing unit.

Operating temperature of 2° to 4° Celsius (37° to 40°F.) under normal store conditions of 24° Celsius (75°F.) with 50% relative humidity.

Condensation on glass may occur under hot & humid conditions.

Product entering the display case must be 4° Celsius (40°F.) or lower.

*Due to constant improvements, specifications are subject to change without notice.



Canadian Display Systems Inc.

177 Westcreek Drive, Woodbridge, Ontario L4L 9N6
Ph: 905-265-7888, 1-800-895-5862 Fax: 905-265-7692

email cds1@on.aibn.com

www.canadandisplayssystems.com