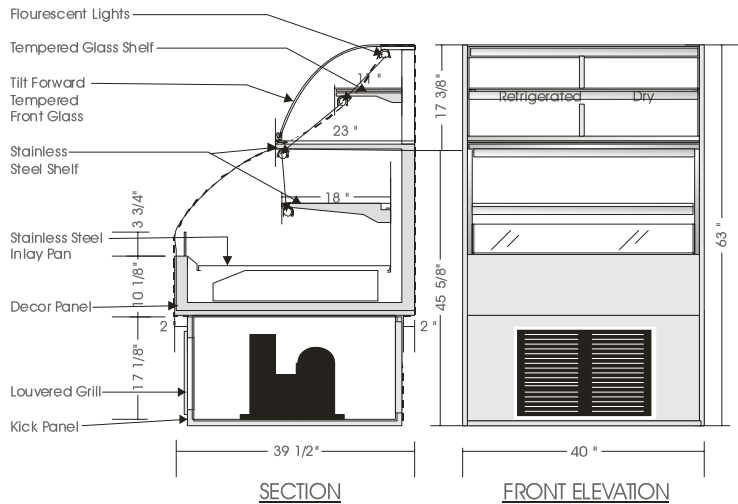


Grab And Go

REF. SELF SERVE/ 1/2 REF. 1/2 DRY SERVE MERCHANDISER – RSRD 63

MODELS: RSRD 6340, RSRD 6350, RSRD 6362, RSRD 6378, RSRD 6398



SPECIFICATIONS

MODEL	DIMENSIONS	UNIT	ELECTRICAL (DUAL VOLTAGE 1 Ph/60Hz)			SHIPPING
			COND. UNIT	LIGHTS	EVAPORATOR PAN(Opt.)	
RSRD 6340	40"L.X39 1/2"D.X63"H.	3/4	230V/ 8.0 AMPS	115V/2.0 AMPS	115V/8.30 AMPS	490 lb.
RSRD 6350	50"L.X39 1/2"D.X63"H.	3/4	230V/ 9.4 AMPS	115V/2.0 AMPS	115V/8.30 AMPS	540 lb.
RSRD 6362	62"L.X39 1/2"D.X63"H.	1.0	230V/12.0 AMPS	115V/2.5 AMPS	115V/8.30 AMPS	590 lb.
RSRD 6378	78"L.X39 1/2"D.X63"H.	1 1/4	230V/14.9 AMPS	115V/2.5 AMPS	115V/8.30 AMPS	640 lb.
RSRD 6398	98"L.X39 1/2"D.X63"H.	1 1/2	230V/17.4 AMPS	115V/3.0 AMPS	115V/8.30 AMPS	690 lb.

Direct connection to Condensing unit, Light & Evaporator pan(Optional).

Floor drain highly recommended for these units. Air flow front to back.

STANDARD FEATURES

1. Top light in upper and lower section.
2. Tempered glass shelf c/w light.
3. Exterior & interior laminate finish - Black.
4. Stainless steel deck and perforated back.
5. Self contained condensing unit.

Operating temperature of 2° to 4° Celsius (37° to 40°F.) under normal store conditions of 24° Celsius (75°F.) with 50% relative humidity.

Condensation on glass may occur under hot & humid conditions.

Product entering the display case must be 4° Celsius (40°F.) or lower.

*Due to constant improvements, specifications are subject to change without notice.

OPTIONS

1. Plastic laminate exterior finish of choice.
2. Powder coated finish in display area.
3. Bumper rails - Specify colour and location.
4. Condensate evaporator pan.
5. Remote compressor installation.



Canadian Display Systems Inc.

177 Westcreek Drive, Woodbridge, Ontario L4L 9N6
Ph: 905-265-7888, 1-800-895-5862 Fax: 905-265-7692

email cds1@on.aibn.com

www.canadiandisplayystems.com