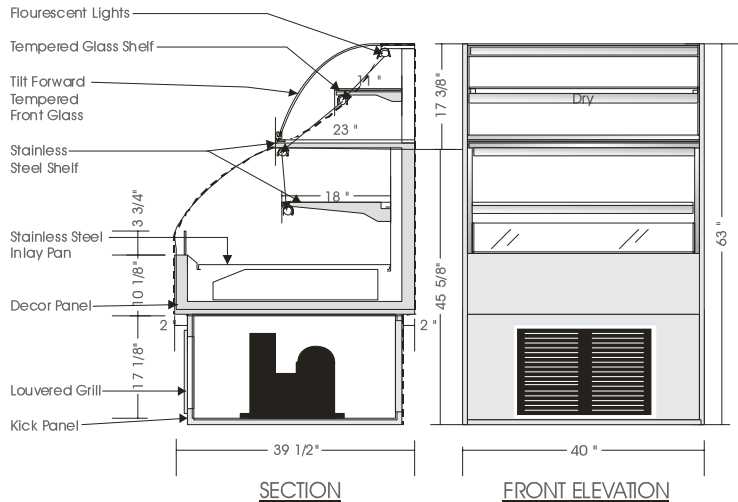


Grab And Go

REF. SELF SERVE/ DRY SERVE MERCHANDISER – RSSD 63

MODELS: RSSD 6340, RSSD 6350, RSSD 6362, RSSD 6378, RSSD 6398



SPECIFICATIONS

MODEL	DIMENSIONS	UNIT	ELECTRICAL (DUAL VOLTAGE 1 Ph/60Hz)			SHIPPING
			H.P.	COND. UNIT	LIGHTS	
RSSD 6340	40"L.X39½"D.X63"H.	½	115V/16.0 AMPS	115V/2.0 AMPS	115V/8.30 AMPS	490 lb.
RSSD 6350	50"L.X39½"D.X63"H.	¾	230V/08.0 AMPS	115V/2.0 AMPS	115V/8.30 AMPS	540 lb.
RSSD 6362	62"L.X39½"D.X63"H.	¾	230V/09.4 AMPS	115V/2.5 AMPS	115V/8.30 AMPS	590 lb.
RSSD 6378	78"L.X39½"D.X63"H.	1.0	230V/12.0 AMPS	115V/2.5 AMPS	115V/8.30 AMPS	640 lb.
RSSD 6398	98"L.X39½"D.X63"H.	1¼	230V/14.9 AMPS	115V/3.0 AMPS	115V/8.30 AMPS	690 lb.

Direct connection to Condensing unit, Light & Evaporator pan (Optional).

Floor drain highly recommended for these units. Air flow front to back.

STANDARD FEATURES

1. Top light in upper and lower section.
2. Tempered glass shelf c/w light.
3. Exterior & interior laminate finish - Black.
4. Stainless steel deck and perforated back.
5. Self contained condensing unit.

Operating temperature of 2° to 4° Celsius (37° to 40°F.) under normal store conditions of 24° Celsius (75°F.) with 50% relative humidity.

Condensation on glass may occur under hot & humid conditions.

Product entering the display case must be 4° Celsius (40°F.) or lower.

*Due to constant improvements, specifications are subject to change without notice.

OPTIONS

1. Plastic laminate exterior finish of choice.
2. Powder coated finish in display area.
3. Bumper rails - Specify colour and location.
4. Condensate evaporator pan.
5. Remote compressor installation.



Canadian Display Systems Inc.

177 Westcreek Drive, Woodbridge, Ontario L4L 9N6
Ph: 905-265-7888, 1-800-895-5862 Fax: 905-265-7692

email [cgs1@on.aibn.com](mailto:cds1@on.aibn.com)

www.canadiandisplayssystems.com