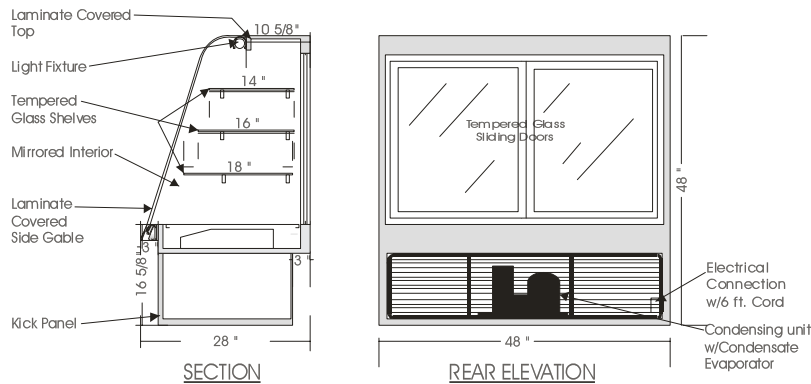


Eurostyle

REFRIGERATED CANDY CASE – CRD

MODELS: CRD 4840, CRD 4848, CRD 4860, CRD 4869, CRD 4878, CRD 4894



SPECIFICATIONS

MODEL	DIMENSIONS	COMPRESSOR	ELECTRICAL	SHIPPING WT.
CRD 4840	40"L.X28"D.X48"H.	¼ H.P.	115V/ 1/60HZ/ 9.0 AMP	400lb.
CRD 4848	48"L.X28"D.X48"H.	¼ H.P.	115V/ 1/60HZ/ 9.0 AMP	480lb.
CRD 4860	60"L.X28"D.X48"H.	¼ H.P.	115V/ 1/60HZ/ 9.5 AMP	550lb.
CRD 4869	69"L.X28"D.X48"H.	¼ H.P.	115V/ 1/60HZ/10.0 AMP	625lb.
CRD 4878	78"L.X28"D.X48"H.	¼ H.P.	115V/ 1/60HZ/10.5 AMP	740lb.
CRD 4894	94"L.X28"D.X48"H.	½ H.P.	115V/ 1/60HZ/11.0 AMP	825lb.

STANDARD FEATURES

1. Top light.
2. Solid sides w/mirrored interior gables.
3. Tempered curved front glass, tilt forward & removable.
4. Tempered glass shelves.
5. Clear satin anodized aluminum hinge.
6. Exterior & interior laminate finish: Black.
7. Self contained compressor w/hot gas condensate evaporator pan.

OPTIONS

1. Shelf lights.
2. Plastic laminate exterior finish of your choice.
3. Powder coated or colour anodized hinge.
4. Custom units on request.
5. Remote condensing unit.

Operating temperature of 15° to 18° Celsius (59° to 65°F.) under normal store conditions of 24° Celsius (75°F.) with 50% relative humidity. Condensation on glass may occur under hot & humid conditions.

*Due to constant improvements, specifications are subject to change without notice.



Canadian Display Systems Inc.

177 Westcreek Drive, Woodbridge, Ontario L4L 9N6
Ph: 905-265-7888, 1-800-895-5862 Fax: 905-265-7692

email cds1@on.aibn.com

www.canadiandisplayssystems.com