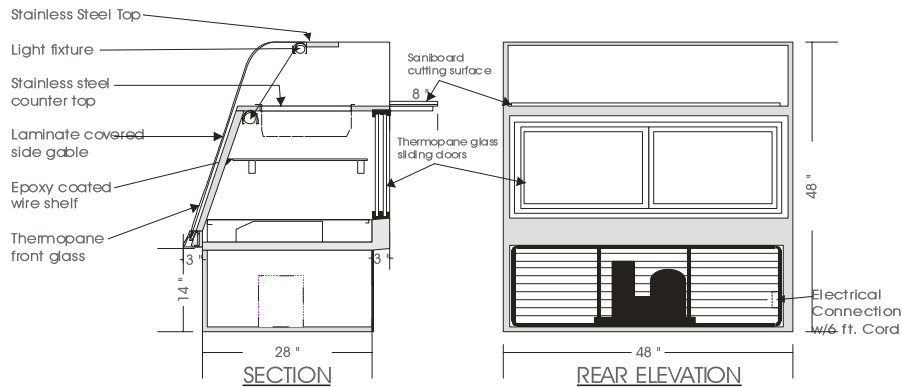


Eurostyle

SALAD/SANDWICH CASE – RSCD

MODELS: RSCD 4848, RSCD 4860, RSCD 4869, RSCD 4878, RSCD 4894



SPECIFICATIONS

MODEL	DIMENSIONS	COMPRESSOR	ELECTRICAL	SHIPPING WT.
RSCD 4848	48"L.X34"D.X48"H.	1/3 H.P.	115V/ 1/60HZ/09.0 AMP	480lb.
RSCD 4860	60"L.X34"D.X48"H.	1/3 H.P.	115V/ 1/60HZ/09.0 AMP	550lb.
RSCD 4869	69"L.X34"D.X48"H.	1/3 H.P.	115V/ 1/60HZ/10.0 AMP	625lb.
RSCD 4878	78"L.X34"D.X48"H.	1/2 H.P.	115V/ 1/60HZ/12.0 AMP	740lb.
RSCD 4894	94"L.X34"D.X48"H.	1/2 H.P.	115V/ 1/60HZ/12.0 AMP	825lb.

STANDARD FEATURES

1. Top light.
2. Top light in lower refrigerated display.
3. Mirrored interior gables. (Lower Ref. Display only)
4. Tempered curved front glass, tilt forward & removable.
5. White epoxy coated wire shelf.
6. Clear satin anodized aluminum hinge.
7. Exterior & interior laminate finish: Black.

OPTIONS

1. Shelf lights.
2. Plastic laminate exterior finish of choice.
3. Powder coated or colour anodized hinge.
4. Custom units on request.
5. Remote condensing unit.

Operating temperature of 2° to 4° Celsius (37° to 40° F.) under normal store conditions of 24° Celsius (75° F.) with 50% relative humidity. Condensation on glass may occur under hot & humid conditions.

Product entering the display case must be 4° Celsius (40° F.) or lower.

*Due to constant improvements, specifications are subject to change without notice.



Canadian Display Systems Inc.

177 Westcreek Drive, Woodbridge, Ontario L4L 9N6
 Ph: 905-265-7888, 1-800-895-5862 Fax: 905-265-7692
 email cds1@on.aibn.com
www.canadiandisplayystems.com