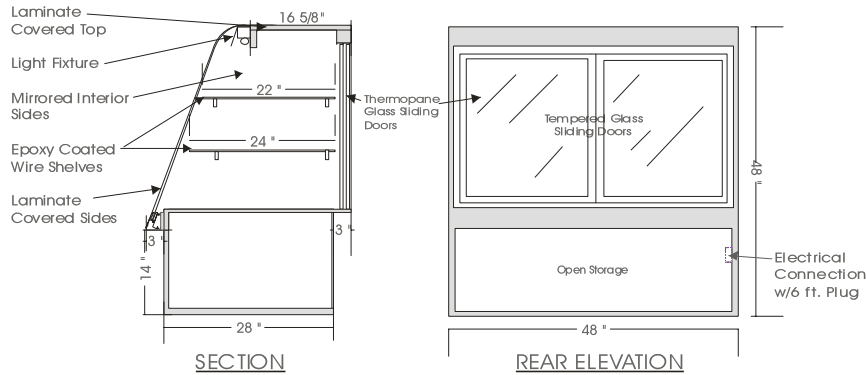


# Eurostyle

## DRY PASTRY – NPDW

MODELS: NPDW 4840, NPDW 4848, NPDW 4860, NPDW 4869, NPDW 4878, NPDW 4894



### SPECIFICATIONS

MODEL	DIMENSIONS	ELECTRICAL	SHIPPING WT.
NPDW 4840	40"L.X34"D.X48"H.	115V/ 1/60HZ/01.0 AMP	300 lb.
NPDW 4848	48"L.X34"D.X48"H.	115V/ 1/60HZ/01.0 AMP	360 lb.
NPDW 4860	60"L.X34"D.X48"H.	115V/ 1/60HZ/01.0 AMP	420 lb.
NPDW 4869	69"L.X34"D.X48"H.	115V/ 1/60HZ/01.0 AMP	460 lb.
NPDW 4878	78"L.X34"D.X48"H.	115V/ 1/60HZ/01.5 AMP	520 lb.
NPDW 4894	94"L.X34"D.X48"H.	115V/ 1/60HZ/02.0 AMP	600 lb.

#### STANDARD FEATURES

1. Top light.
2. Solid sides w/mirrored interior gables.
3. Tempered curved front glass, tilt forward & removable.
4. White epoxy coated wire shelves.
5. Clear satin anodized aluminum hinge.
6. Exterior & interior laminate finish: Black.

#### OPTIONS

1. Shelf lights.
2. Plastic laminate exterior finish of choice.
3. Powder coated or colour anodized hinge.
4. Custom units on request.

\*Due to constant improvements, specifications are subject to change without notice.

## Canadian Display Systems Inc.

177 Westcreek Drive, Woodbridge, Ontario L4L 9N6  
 Ph: 905-265-7888, 1-800-895-5862 Fax: 905-265-7692  
 email [cds1@on.aibn.com](mailto:cds1@on.aibn.com)  
[www.canadiandisplayystems.com](http://www.canadiandisplayystems.com)