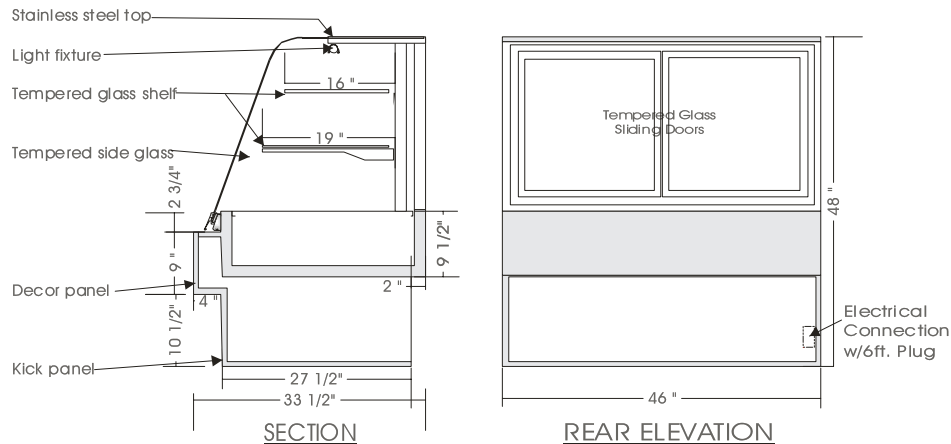


Eurostyle

DRY DISPLAY – NPDF

MODELS: NPDF 4838, NPDF 4846, NPDF 4858, NPDF 4876, NPDF 4892



SPECIFICATIONS

MODEL	DIMENSIONS	ELECTRICAL	SHIPPING WT.
NPDF 4838	38"L.X33 1/2"D.X48"H.	115V/ 1/60HZ/ 1.0 AMP	300 lb.
NPDF 4846	46"L.X33 1/2"D.X48"H.	115V/ 1/60HZ/ 1.0 AMP	360 lb.
NPDF 4858	58"L.X33 1/2"D.X48"H.	115V/ 1/60HZ/ 1.0 AMP	420 lb.
NPDF 4876	76"L.X33 1/2"D.X48"H.	115V/ 1/60HZ/ 1.5 AMP	520 lb.
NPDF 4892	92"L.X33 1/2"D.X48"H.	115V/ 1/60HZ/ 2.0 AMP	600 lb.

STANDARD FEATURES

1. Top light.
2. Tempered side glass, removable.
3. Tempered curved front glass, tilt forward & removable.
4. White epoxy coated wire shelves.
5. Clear satin anodized aluminum hinge and framework.
6. Exterior & interior laminate finish: Black.

OPTIONS

1. Shelf lights.
2. Plastic laminate exterior finish of choice.
3. Powder coated or colour anodized hinge.
4. Laminated covered side gables.
5. Custom units on request.

*Due to constant improvements, specifications are subject to change without notice.



Canadian Display Systems Inc.

177 Westcreek Drive, Woodbridge, Ontario L4L 9N6
Ph: 905-265-7888, 1-800-895-5862 Fax: 905-265-7692

email cds1@on.aibn.com

www.canadiandisplayystems.com