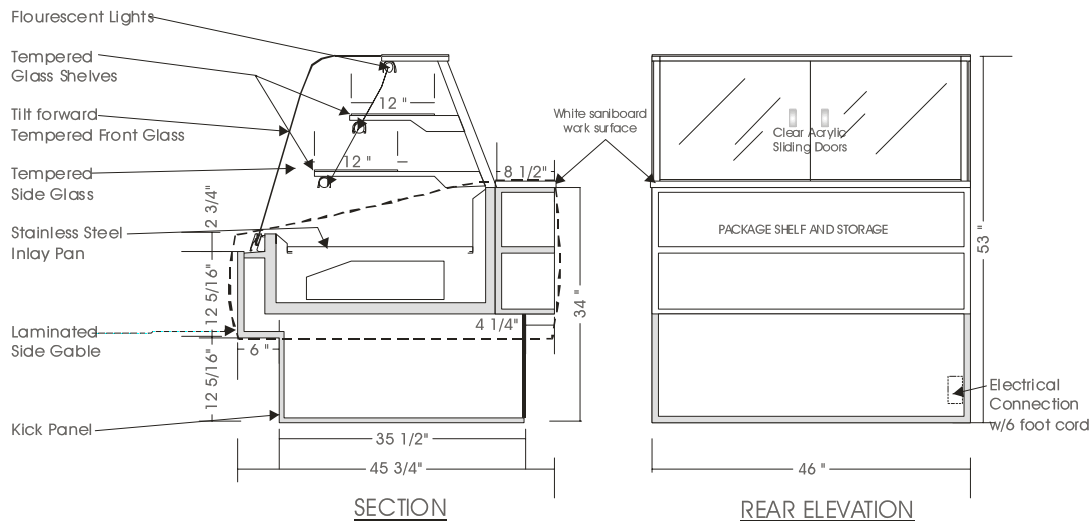


Eurostyle

DRY CASE – NPN

MODELS: NPN 5338, NPN 5346, NPN 5358, NPN 5376, NPN 5392



SPECIFICATIONS

MODEL	DIMENSIONS	ELECTRICAL	SHIPPING WT.
NPN 5338	38"L.X45 $\frac{3}{4}$ "D.X53"H.	115V/ 1/60HZ/1.5 AMP	300
NPN 5346	46"L.X45 $\frac{3}{4}$ "D.X53"H.	115V/ 1/60HZ/1.5 AMP	360
NPN 5358	58"L.X45 $\frac{3}{4}$ "D.X53"H.	115V/ 1/60HZ/1.5 AMP	420
NPN 5376	76"L.X45 $\frac{3}{4}$ "D.X53"H.	115V/ 1/60HZ/2.0 AMP	520
NPN 5392	92"L.X45 $\frac{3}{4}$ "D.X53"H.	115V/ 1/60HZ/3.0 AMP	600

Note: Add $\frac{3}{4}$ " each side for side gables.

STANDARD FEATURES

1. Top light.
2. Shelf lights.
3. Tempered curved front glass, tilt forward & removable.
4. Clear satin anodized aluminum hinge & framework.
5. Exterior & interior lamination finish: Black
6. Laminate covered display deck.
7. Lamination covered side gables.
8. Full extension pullout drawer.

OPTIONS

1. Plastic laminate exterior finish of choice.
2. Powder coated aluminum hinge and framework.
3. Custom anodized colour hinge and framework.
4. Custom units on request.

*Due to constant improvements, specifications are subject to change without notice.



Canadian Display Systems Inc.

177 West Creek Drive, Woodbridge, Ontario L4L 9N6
 Ph: 905-265-7888, 1-800-895-5862 Fax: 905-265-7692
 email cds1@on.caibn.com
www.canadiandisplayystems.com