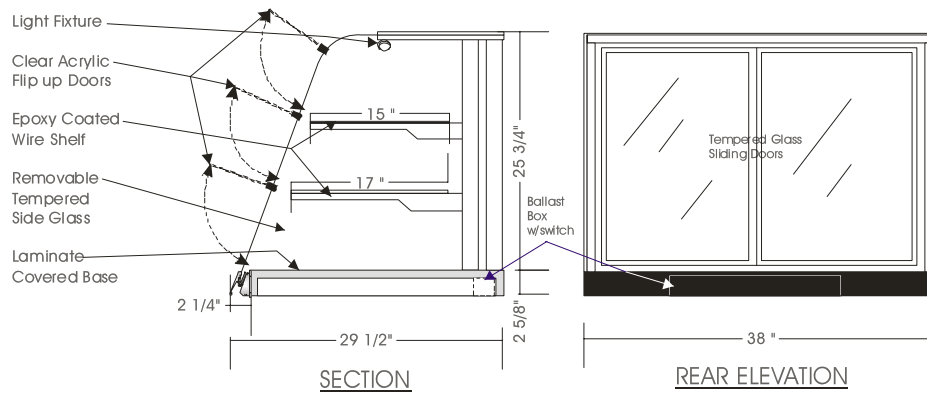


Eurostyle Counter Top

DRY SELF SERVE DISPLAY CASE – CTDS 26

MODELS: CTDS 2638, CTDS 2648, CTDS 2660



SPECIFICATIONS

MODEL	DIMENSIONS	ELECTRICAL	SHIPPING WT
CTDS 2638	38"L.X29½"D.X28¾"H.	115V/1/60 HZ/1.0 AMP	140 lb.
CTDS 2648	48"L.X29½"D.X28¾"H.	115V/1/60 HZ/1.2 AMP	190 lb.
CTDS 2660	60"L.X29½"D.X28¾"H.	115V/1/60 HZ/1.5 AMP	260 lb.

NOTE: 28¾" HT. from counter top

STANDARD FEATURES

1. Top light.
2. Tempered side glass, removable.
3. Six clear acrylic flip doors.
4. Tempered curved glass top.
5. Clear satin anodized aluminum hinge and framework.
6. Tempered glass sliding doors.
7. Exterior & interior laminate finish: Black.

OPTIONS

1. Tempered glass shelves.
2. Shelf lights w/electronic ballast.
3. Exterior plastic laminate finish of choice.
4. Powder coated or colour anodized hinge and framework.
5. Base can be added to make floor model.

*Due to constant improvements, specifications are subject to change without notice.



Canadian Display Systems Inc.

177 Westcreek Drive, Woodbridge, Ontario L4L 9N6
 Ph: 905-265-7888, 1-800-895-5862 Fax: 905-265-7692
 email [cgs1@on.aibn.com](mailto:cds1@on.aibn.com)

www.canadiandisplayssystems.com