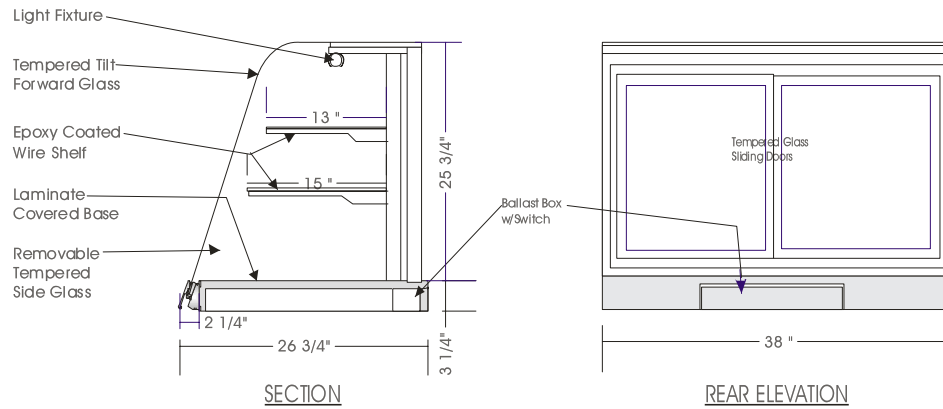


Eurostyle Counter Top

DRY DISPLAY CASE – CTD 26

MODELS: CTD 2624, CTD 2638, CTD 2646, CTD 2658



SPECIFICATIONS

MODEL	DIMENSIONS	ELECTRICAL	SHIPPING WT
CTD 2624	24"L.X26 ³ / ₄ "D.X28 ⁵ / ₈ "H.	115V/1/60 HZ/0.30 AMP	100 lb.
CTD 2638	38"L.X26 ³ / ₄ "D.X28 ⁵ / ₈ "H.	115V/1/60 HZ/0.50 AMP	130 lb.
CTD 2646	46"L.X26 ³ / ₄ "D.X28 ⁵ / ₈ "H.	115V/1/60 HZ/0.60 AMP	160 lb.
CTD 2658	58"L.X26 ³ / ₄ "D.X28 ⁵ / ₈ "H.	115V/1/60 HZ/0.60 AMP	250 lb.

NOTE: 28⁵/₈" HT. from counter top

STANDARD FEATURES

1. Top light.
2. Tempered side glass, removable.
3. Tempered curved front glass, tilt forward and removable.
4. Clear satin anodized aluminum hinge and framework.
5. Tempered glass sliding doors.
6. Exterior & interior laminate finish: Black.

OPTIONS

1. Tempered glass shelves.
2. Shelf lights w/electronic ballast.
3. Exterior plastic laminate finish of choice.
4. Powder coated or colour anodized hinge and framework.
5. Base can be added to make floor model.

*Due to constant improvements, specifications are subject to change without notice.



Canadian Display Systems Inc.

177 West Creek Drive, Woodbridge, Ontario L4L 9N6
 Ph: 905-265-7888, 1-800-895-5862 Fax: 905-265-7692
 email cds1@on.aibn.com
www.canadiandisplayystems.com