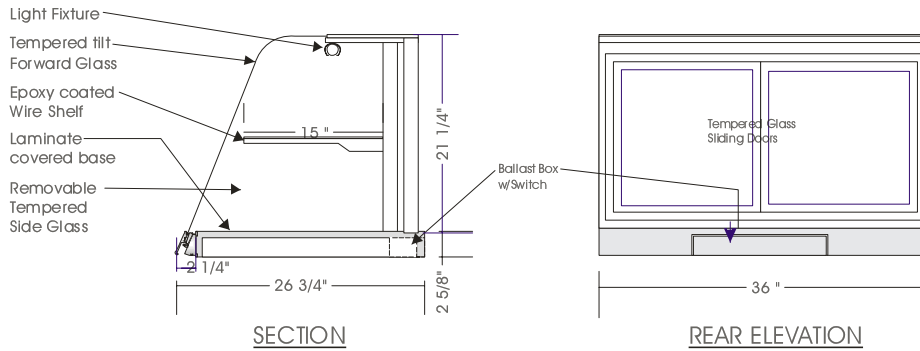


# Eurostyle Counter Top

## DRY LOW PROFILE CASE – CTD 21

MODELS: CTD 2124, CTD 2136, CTD 2148, CTD 2160



### SPECIFICATIONS

MODEL	DIMENSIONS	ELECTRICAL	SHIPPING WT
CTD 2124	24"L.X26 <sup>3</sup> / <sub>4</sub> "D.X23 <sup>7</sup> / <sub>8</sub> "H.	115V/1/60 HZ/0.30 AMP	100 lb.
CTD 2136	36"L.X26 <sup>3</sup> / <sub>4</sub> "D.X23 <sup>7</sup> / <sub>8</sub> "H.	115V/1/60 HZ/0.50 AMP	130 lb.
CTD 2148	48"L.X26 <sup>3</sup> / <sub>4</sub> "D.X23 <sup>7</sup> / <sub>8</sub> "H.	115V/1/60 HZ/0.60 AMP	160 lb.
CTD 2160	60"L.X26 <sup>3</sup> / <sub>4</sub> "D.X23 <sup>7</sup> / <sub>8</sub> "H.	115V/1/60 HZ/0.60 AMP	250 lb.

**NOTE: 23<sup>7</sup>/<sub>8</sub>" HT. from counter top**

#### STANDARD FEATURES

1. Top light.
2. Tempered side glass, removable.
3. Tempered curved front glass, tilt forward and removable.
4. Clear satin anodized aluminum hinge and framework.
5. Tempered glass sliding doors.
6. Exterior & interior laminate finish: Black.

#### OPTIONS

1. Additional shelf.
2. Tempered glass shelves.
3. Shelf lights w/electronic ballast.
4. Exterior plastic laminate finish of choice.
5. Powder coated or colour anodized hinge and framework.
6. Base can be added to make floor model.

\*Due to constant improvements, specifications are subject to change without notice.



## Canadian Display Systems Inc.

177 Westcreek Drive, Woodbridge, Ontario L4L 9N6  
 Ph: 905-265-7888, 1-800-895-5862 Fax: 905-265-7692  
 email [cds1@on.aibn.com](mailto:cds1@on.aibn.com)

[www.canadiandisplayssystems.com](http://www.canadiandisplayssystems.com)