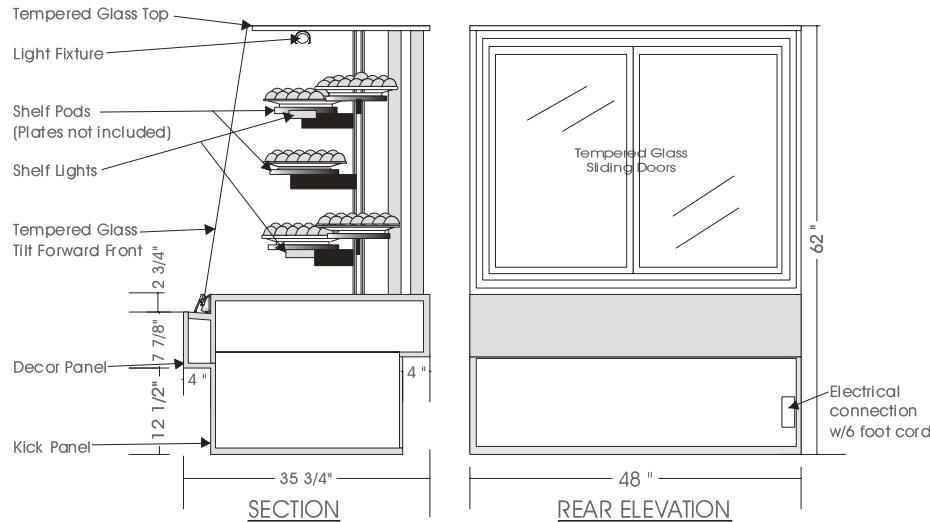


# Concept

## DRY MERCHANDISER – CDM 62

MODELS: CDM 6238, CDM 6248



### SPECIFICATIONS

MODEL	DIMENSIONS	ELECTRICAL	SHIPPING WT.
CDM 6238	38"L.X35 <sup>3</sup> / <sub>4</sub> "D.X62"H.	115/1/60 HZ/2.0 AMP	300 lb.
CDM 6248	48"L.X35 <sup>3</sup> / <sub>4</sub> "D.X62"H.	115/1/60 HZ/2.0 AMP	360 lb.

#### STANDARD FEATURES

1. Top light and shelf lights.
2. Adjustable plate pods.
3. Black anodized aluminum hinge and framework.
4. Exterior & interior laminate finish: Black.

#### OPTIONS

1. Plastic laminate exterior finish of choice.
2. Powder coated aluminum hinge and framework.
3. Custom units on request.
4. Straight shelves or baskets.

\*Due to constant improvements, specifications are subject to change without notice.



## Canadian Display Systems Inc.

177 West Creek Drive, Woodbridge, Ontario L4L 9N6  
 Ph: 905-265-7888, 1-800-895-5862 Fax: 905-265-7692  
 email [cds1@on.aibn.com](mailto:cds1@on.aibn.com)  
[www.canadiandisplayystems.com](http://www.canadiandisplayystems.com)