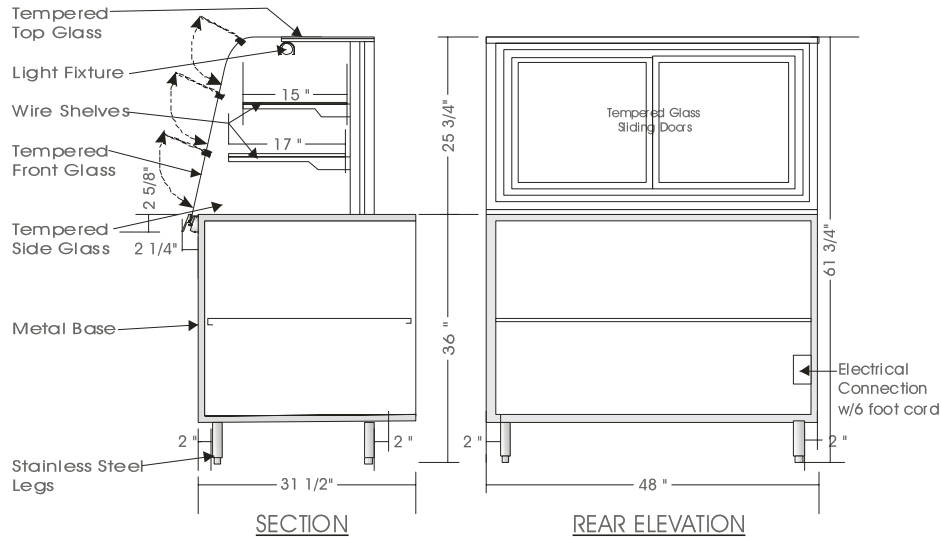


Cafeteria

DRY SELF SERVE DISPLAY CASE – ESNS

ESNS 6138, ESNS 6148, ESNS 6160



SPECIFICATIONS

MODEL	DIMENSIONS	ELECTRICAL	SHIPPING WT.
ESNS 6138	38"L.X34"D.X61 $\frac{3}{4}$ "H.	115V/1/60HZ/ 1.0 AMP	310 lb.
ESNS 6148	48"L.X34"D.X61 $\frac{3}{4}$ "H.	115V/1/60HZ/ 1.0 AMP	390 lb.
ESNS 6160	60"L.X34"D.X61 $\frac{3}{4}$ "H.	115V/1/60HZ/ 1.5 AMP	440 lb.

STANDARD FEATURES

1. Top light.
2. Clear acrylic lift up doors.
3. Painted exterior finish.
4. Stainless steel top and rear panels.
5. All metal construction.
6. Tempered glass top.
7. Clear satin anodized aluminum hinge and framework.
8. Tempered removable side glass.

OPTIONS

1. White sani cutting board surface.
2. Powder coated or colour anodized hinge and framework.
3. Stainless steel front and sides.
4. Shelf lights.

*Due to constant improvements, specifications are subject to change without notice.



Canadian Display Systems Inc.

177 Westcreek Drive, Woodbridge, Ontario L4L 9N6
 Ph: 905-265-7888, 1-800-895-5862 Fax: 905-265-7692
 email cds1@on.aibn.com
www.canadiandisplayssystems.com