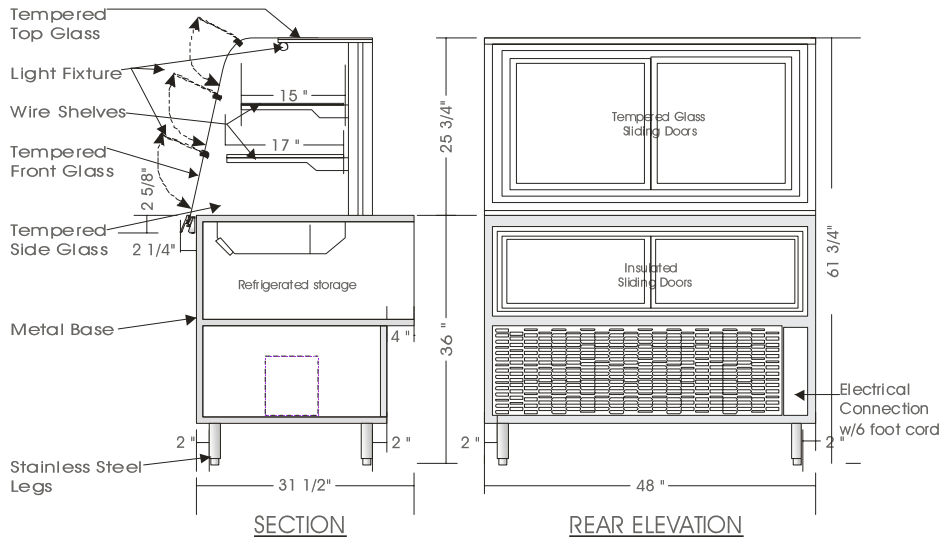


Cafeteria

REFRIGERATED SELF SERVE DISPLAY CASE – ESRS

ESRS 6138, ESRS 6148, ESRS 6160



SPECIFICATIONS

MODEL	DIMENSIONS	COMPRESSOR	ELECTRICAL	SHIPPING WT.
ESRS 6138	38\"L.X34\"D.X61 3/4\"H.	1/3 H.P.	115V/1/60HZ/10.0 AMP	430 lb.
ESRS 6148	48\"L.X34\"D.X61 3/4\"H.	1/2 H.P.	115V/1/60HZ/12.0 AMP	490 lb.
ESRS 6160	60\"L.X34\"D.X61 3/4\"H.	1/2 H.P.	115V/1/60HZ/13.0 AMP	620 lb.

STANDARD FEATURES

1. Top light.
2. Clear acrylic lift up doors.
3. Painted exterior finish.
4. Stainless steel top and rear panels.
5. All metal construction.
6. Tempered curved front glass (Sneeze-guard), tilt forward and removable.
7. Clear satin anodized aluminum hinge and framework.
8. Self contained air cooled compressor w/hot gas condensate evaporator pan.
9. Refrigerated storage.

OPTIONS

1. White sani cutting board surface.
2. Powder coated or colour anodized hinge and framework.
3. Stainless steel front and sides.
4. Shelf lights.
5. Remote condensing unit.

Operating temperature of 2° to 4° Celsius (37° to 40° F.) under normal store conditions of 24° Celsius (75° F.) with 50% relative humidity. Condensate may occur under hot & humid conditions. Product entering the display case must be 4° Celsius (40° F.) or lower.

*Due to constant improvements, specifications are subject to change without notice.



Canadian Display Systems Inc.

177 West Creek Drive, Woodbridge, Ontario L4L 9N6
 Ph: 905-265-7888, 1-800-895-5862 Fax: 905-265-7692
 email cds1@on.aibn.com
www.canadiandisplayystems.com