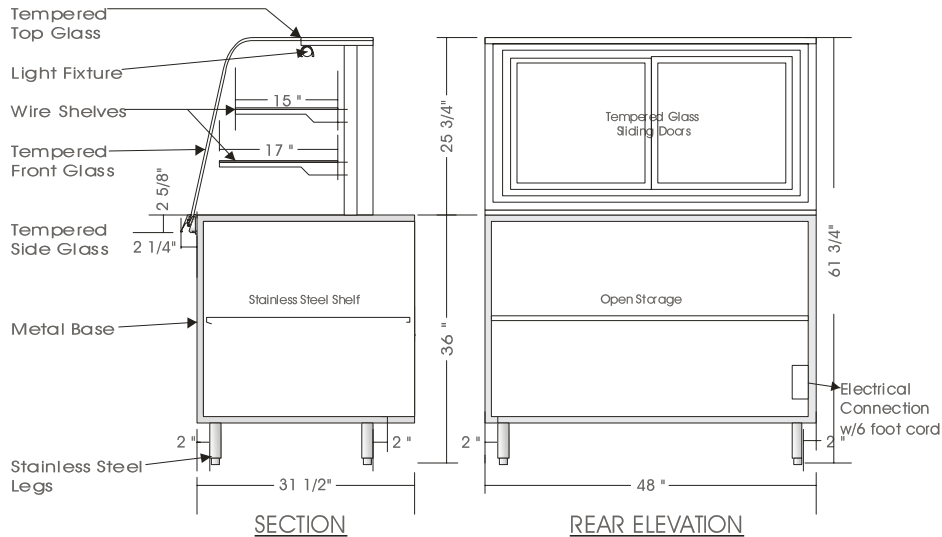


Cafeteria

DRY SERVE DISPLAY CASE – ESND

ESND 6138, ESND 6146, ESND 6158



SPECIFICATIONS

MODEL	DIMENSIONS	ELECTRICAL	SHIPPING WT.
ESND 6138	38"L.X34"D.X61 3/4"H.	115V/1/60HZ/01.0 AMP	360 lb.
ESND 6146	46"L.X34"D.X61 3/4"H.	115V/1/60HZ/01.0 AMP	400 lb.
ESND 6158	58"L.X34"D.X61 3/4"H.	115V/1/60HZ/01.0 AMP	500 lb.

STANDARD FEATURES

1. Top light.
2. White sani cutting board surface.
3. Painted exterior finish.
4. Stainless steel top and rear panels.
5. All metal construction.
6. Tempered curved front glass (Sneeze-guard), tilt forward and removable.
7. Clear satin anodized aluminum hinge and framework.

OPTIONS

1. Powder coated or colour anodized hinge and framework.
2. Stainless steel front and sides.
3. Shelf lights.

*Due to constant improvements, specifications are subject to change without notice.



Canadian Display Systems Inc.

177 Westcreek Drive, Woodbridge, Ontario L4L 9N6
 Ph: 905-265-7888, 1-800-895-5862 Fax: 905-265-7692
 email cds1@on.aibn.com
www.canadiandisplayssystems.com