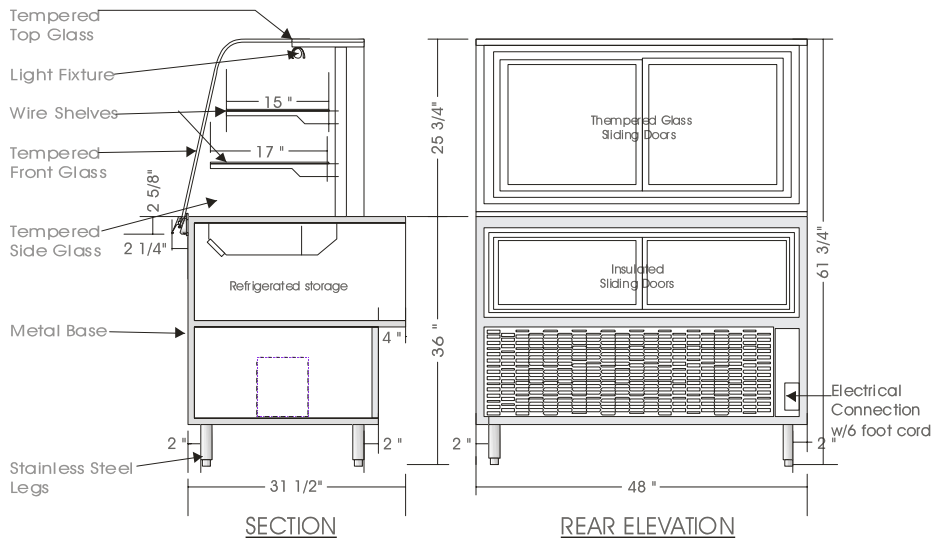


Cafeteria

REFRIGERATED SERVE DISPLAY CASE – ESRD

ESRD 6138, ESRD 6146, ESRD 6158



SPECIFICATIONS

MODEL	DIMENSIONS	COMPRESSOR	ELECTRICAL	SHIPPING WT.
ESRD 6138	38"L.X34"D.X61¾"H.	⅓ H.P.	115V/1/60HZ/ 9.0 AMP	430 lb.
ESRD 6146	46"L.X34"D.X61¾"H.	⅓ H.P.	115V/1/60HZ/10.0 AMP	490 lb.
ESRD 6158	58"L.X34"D.X61¾"H.	½ H.P.	115V/1/60HZ/12.5 AMP	600 lb.

STANDARD FEATURES

1. Top light.
2. Painted exterior finish.
3. Stainless steel top and rear panels.
4. All metal construction.
5. Tempered curved front glass (Sneeze-guard), tilt forward and removable.
6. Clear satin anodized aluminum hinge and framework.
7. Self contained air cooled compressor w/hot gas condensate evaporator pan.
8. Refrigerated storage.

OPTIONS

1. White sani cutting board surface.
2. Plastic laminate exterior finish of choice.
3. Powder coated or colour anodized hinge and framework.
4. Stainless steel front and sides.
5. Shelf lights.
6. Remote condensing unit.
7. Front glass defogging system (Depth increases by 2').

Operating temperature of 2° to 4° Celsius (37° to 40°F.) under normal store conditions of 24° Celsius (75°F.) with 50% relative humidity. Condensation on glass may occur under hot & humid conditions.

Product entering the display case must be 4° Celsius (40°F.) or lower.

*Due to constant improvements, specifications are subject to change without notice.



Canadian Display Systems Inc.

177 West Creek Drive, Woodbridge, Ontario L4L 9N6
 Ph: 905-265-7888, 1-800-895-5862 Fax: 905-265-7692
 email cds1@on.aibn.com
www.canadiandisplayystems.com