

ITEM NO. _____
 PROJECT: _____
 DATE: _____

SQD DRY DISPLAY CASE



SQD 4848 W/STAINLESS STEEL SHELVES

- | | |
|--------------------------------|-------------------|
| <input type="checkbox"/> SQD 3 | 36"L.X30"D.X50"H. |
| <input type="checkbox"/> SQD 4 | 48"L.X30"D.X50"H. |
| <input type="checkbox"/> SQD 5 | 60"L.X30"D.X50"H. |
| <input type="checkbox"/> SQD 6 | 72"L.X30"D.X50"H. |
| <input type="checkbox"/> SQD 8 | 96"L.X30"D.X50"H. |

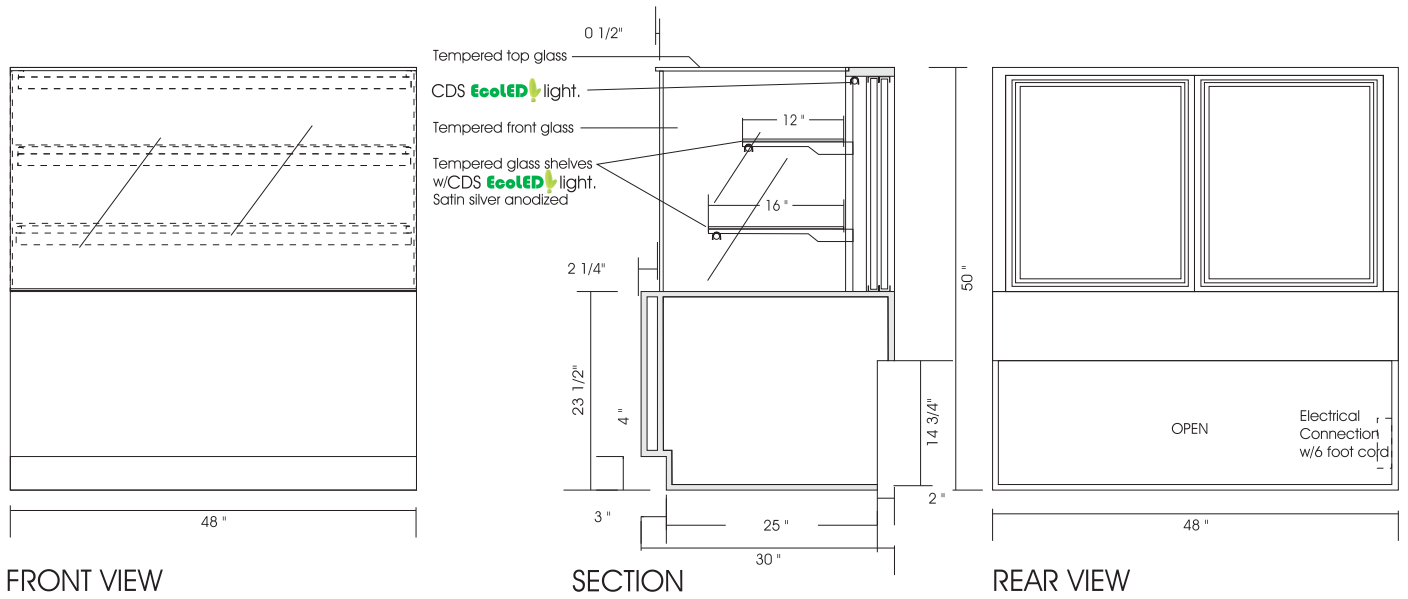
STANDARD FEATURES

1. Top LED light.
2. Top glass.
3. Two (2) tempered glass shelves w/LED shelf lights.
4. Stainless steel inlay pan.
6. Tempered glass rear sliding doors.
7. Standard high pressure laminate - Black.

OPTIONS

- Exterior plastic laminate of choice.
- Stainless steel shelves.
- Powder coated metal components.
- Custom units on request.
- Solid side gables with mirrored interiors.

MODEL	DIMENSIONS	ELECTRICAL	SHIPPING WT.
SQD 3	36"L.X30"D.X50"H.	1 15V/1/60HZ/ 1.0 AMPS	240 lb.
SQD 4	48"L.X30"D.X50"H.	1 15V/1/60HZ/ 1.5 AMPS	270 lb.
SQD 5	60"L.X30"D.X50"H.	1 15V/1/60HZ/ 2.0 AMPS	320 lb.
SQD 6	72"L.X30"D.X50"H.	1 15V/1/60HZ/ 2.5 AMPS	450 lb.
SQD 8	96"L.X30"D.X50"H.	1 15V/1/60HZ/ 3.0 AMPS	590 lb.



* Due to constant improvements, specifications are subject to change without notice.



Canadian Display Systems Inc.
 1-800-895-5862 (Toll Free)
cds1@on.aibn.com
www.canadiandisplayystems.com

